

Business Plan Phase 1 Highlights

Idaho Geospatial Committee
April 16, 2009

Strategic Vision and Mission



□ Vision

Idaho's Spatial Data Infrastructure is fully developed, maintained and managed and supports the missions of Idaho organizations through easy access to high-quality geographic information and related services.

□ Mission

With leadership by state government and active participation from stakeholders statewide, we will develop, deploy and efficiently operate the SDI to meet the geographic information needs of users and delivering benefits to a wide spectrum of organizations and people in Idaho.

Plan Implementation



Phase 1: January 2009 through December 2010

- Work Plan templates, practices, procedures
- MS Project to track initiatives and progress

Governance



- ▣ Fill all seats in existing IGC
- ▣ Prepare for transition to proposed structure, including
 - ▣ Transition Plan
 - ▣ Refresh Executive Order
 - ▣ Bylaws
 - ▣ Timeline
- ▣ Membership recruitment in Idaho Geospatial Council

State Agency Coordination



- Identify state agency GIS leads
- Convene state agency representatives to form stakeholder group

GIO initiating this component

Augment Coordination Resources



Framework Coordinator

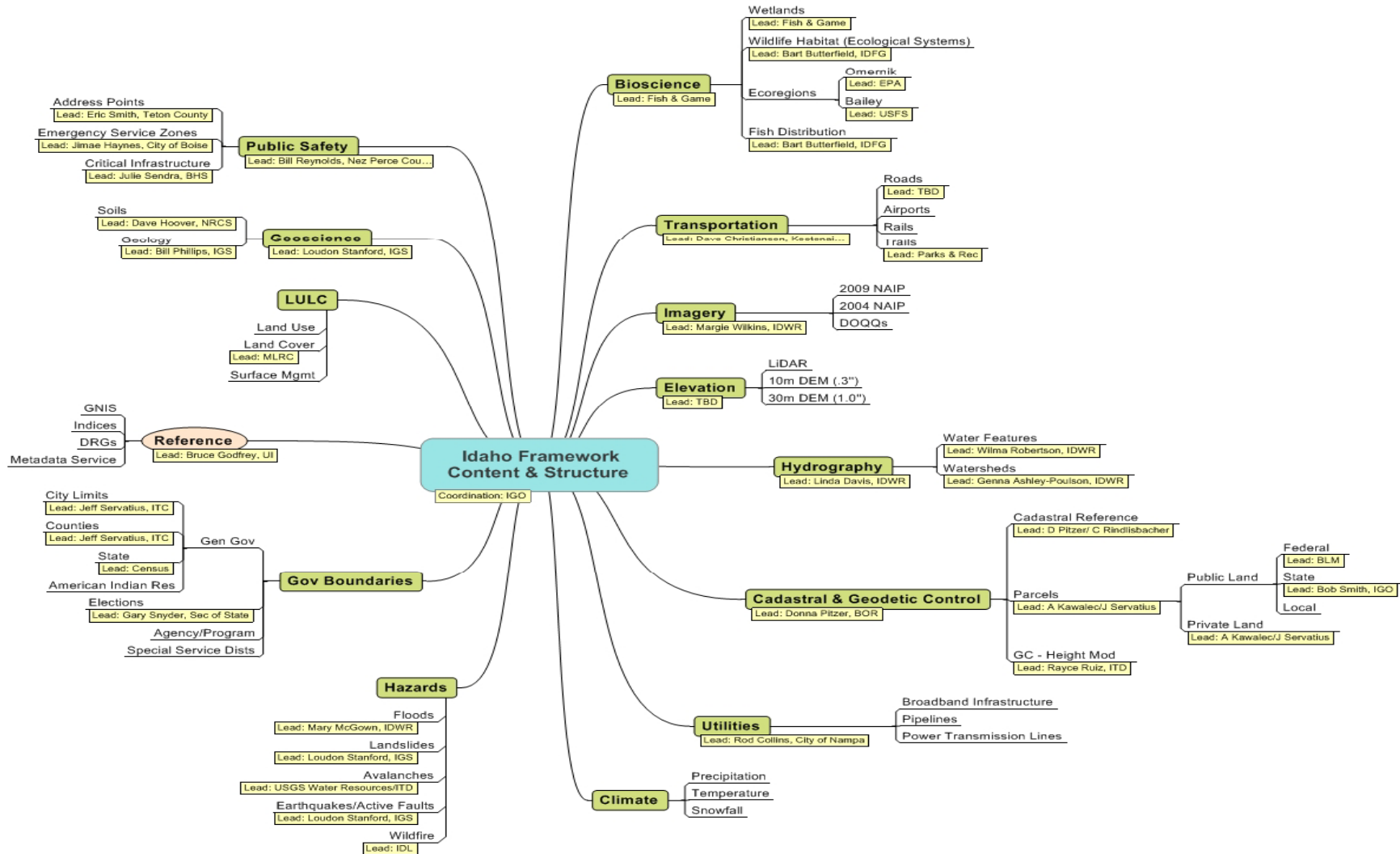
- ▣ Technical management of 13 data workgroups
- ▣ Leads Framework Implementation Team
- ▣ Assists standards and data development
- ▣ Coordinates stewardship design and implementation
- ▣ Assists in establishing guidelines, best practices, and standard operating procedures
- ▣ Assists and supports GIO on other components of spatial data infrastructure

Framework Standards



- ▣ Establish policy for Framework standards development and template
- ▣ Begin developing Framework standards

Framework – finalize content



Stewardship



- ▣ Convene ad hoc stewardship workgroup
- ▣ Develop Framework stewardship approach with guidance, templates, etc.
- ▣ Iterative process to acceptance

Regional Resource Center



- Identify and plan for first Regional Resource Center
- Determine funding model
- Establish Center

Lewiston area has expressed interest

Technical Infrastructure



- Financial support for INSIDE Idaho
 - ▣ Replace equipment
 - ▣ Purchase software
 - ▣ Enhance services
 - ▣ Augment manpower
- Failover, mirroring, load balancing
 - ▣ ISU and state

Only bits and pieces will be accomplished in Phase 1

Data Sharing Strategies



- Sustain statewide conversation
- Work out the value proposition with local officials, IAC, state
- Examine public records law, case law, and plan approach
- Build support for recording fee legislation or other cadastral funding source

“Killer” Application



- Identify, design, develop and deploy attention-garnering application

Communication & Promotion Plan



- Strategic Communication
 - 30 sec. elevator speech (three major points)
 - Messenger Corps
- Promotion
 - ISDI logo (accomplished)
 - ISDI brochure (accomplished)

Opportunity Knocks



- 911 Commission funding for 911 mapping solution
- \$1 million October 2009
- Need plans for building Public Safety Framework, plus Road Centerlines and maybe Parcels, too